



Infrared PdM Inspection Management System

The Thermal Trend Lean DB installation is broken down into three different steps. Step one is the Program installation. Step two is the registration and activation of your software. The third step is to set your storage folder for infrared images, photos, and attachments.

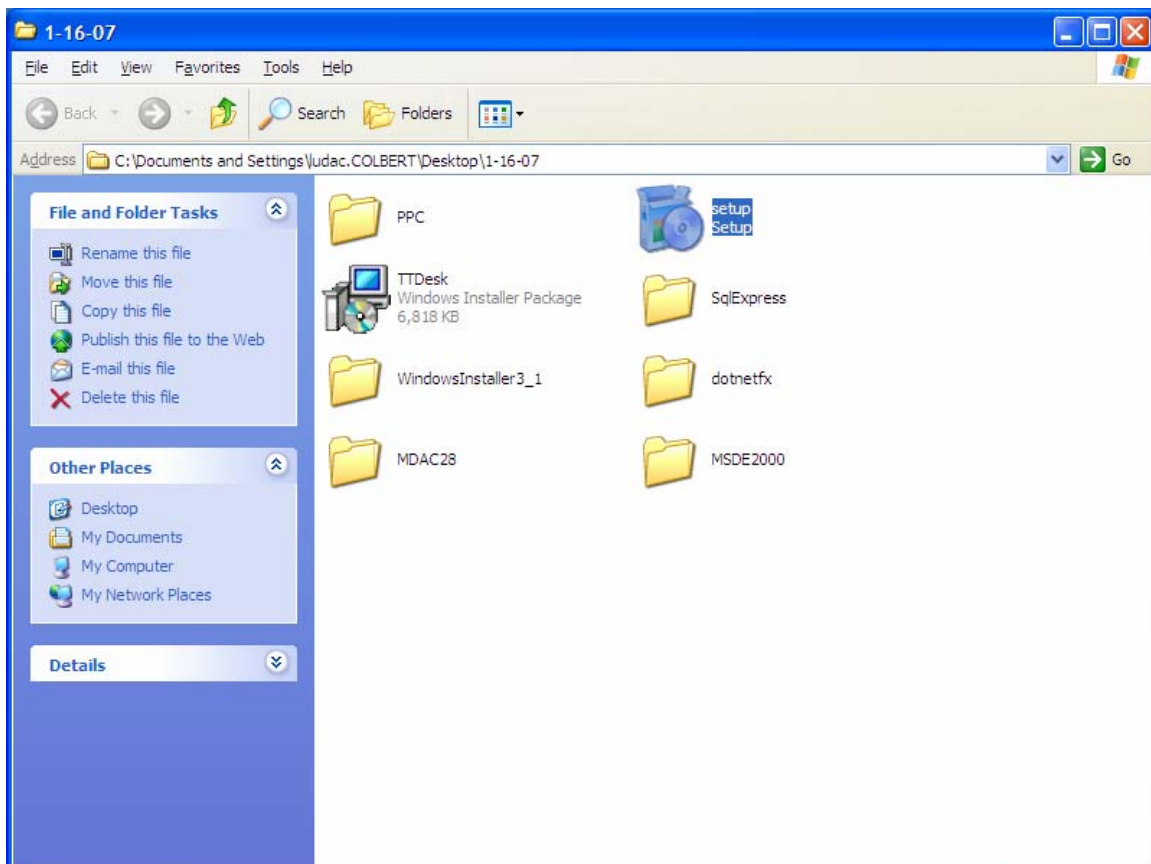
Thermal Trend is a Microsoft SQL application that requires the installation of Microsoft's ".Net Frame Work" and the "MSDE" database engine.

## Instructions:

**Insert installation CD into your computer CD ROM.**

### STEP 1:

A. Install Thermal Trend by double clicking on "setup.exe" file.

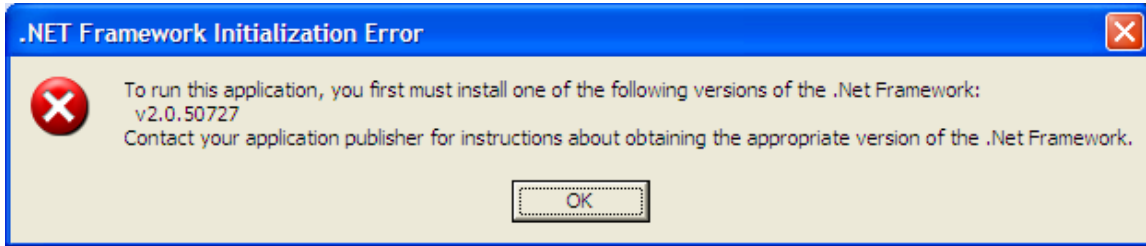




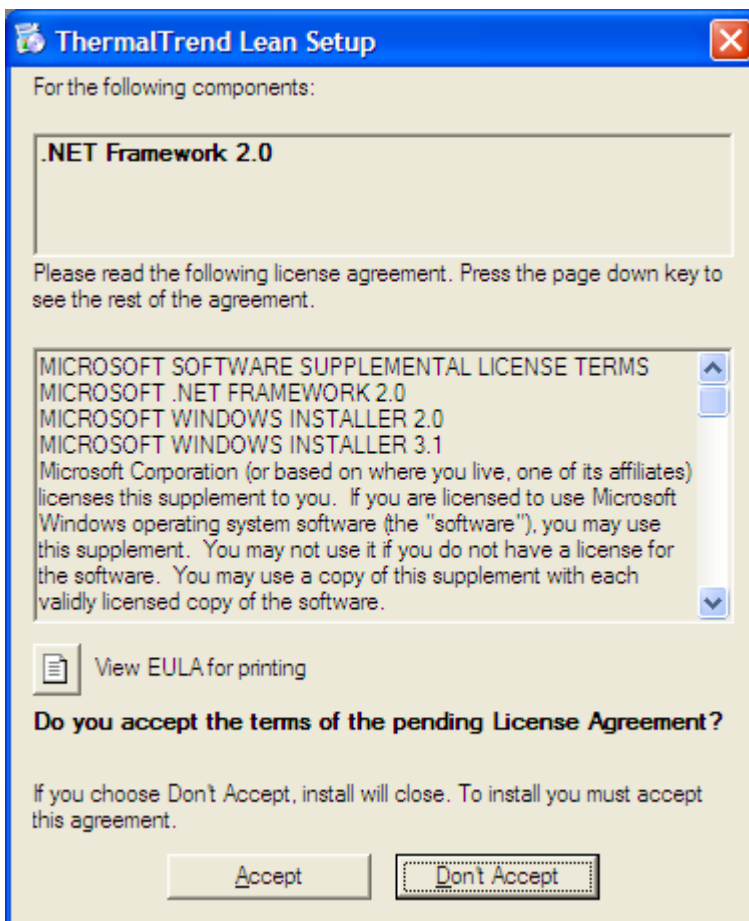
# Thermal Trend

Infrared PdM Inspection Management System

**B.** The installer will check for the appropriate .Net application if it is not present the screen below will appear; click the ok button to start the .Net and MSDE install.



**C.** You will need to accept the EULA (End User License Agreement) to continue with the Installation.

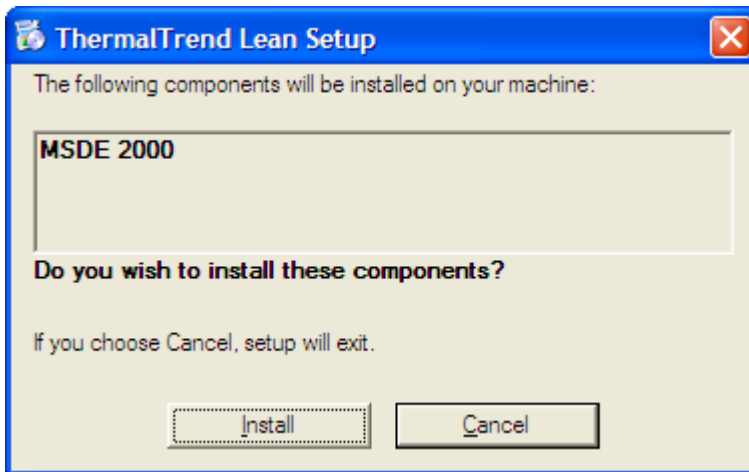




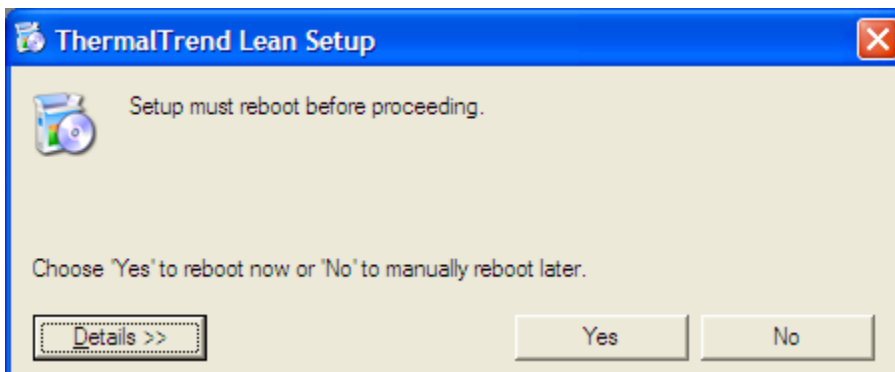
# Thermal Trend

Infrared PdM Inspection Management System

**D.** Click the Install button to continue with the installation of the MSDE 2000. This installs the Database engine that stores the Thermal Trend Lean DB data.



**E.** The installation of MSDE and the .Net frame work may require a reboot of your computer, click yes to reboot your computer and continue with the installation process.

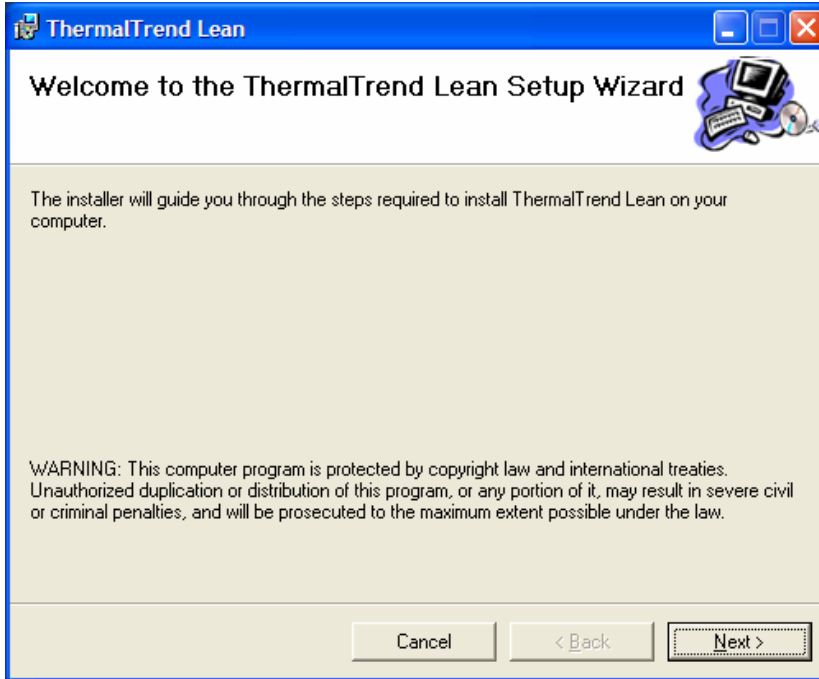




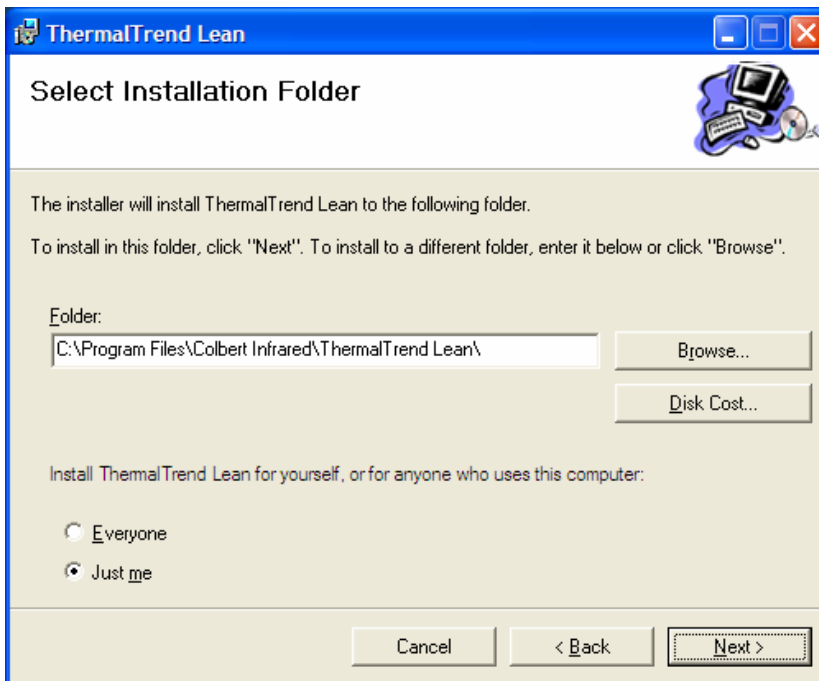
# Thermal Trend

Infrared PdM Inspection Management System

**F.** Once the computer has rebooted the installer should automatically continue with the installation of Thermal Trend. Note: if the setup wizard below did not come up after the reboot double click on the setup.exe file again (Step **A.**) and the screen below should appear. Click the Next button to continue the installation process.



**G.** Choose to install for the current user logged into the computer or everyone. You can also change the default location of the installed files. Note: it is recommended that you install the program in the default location.

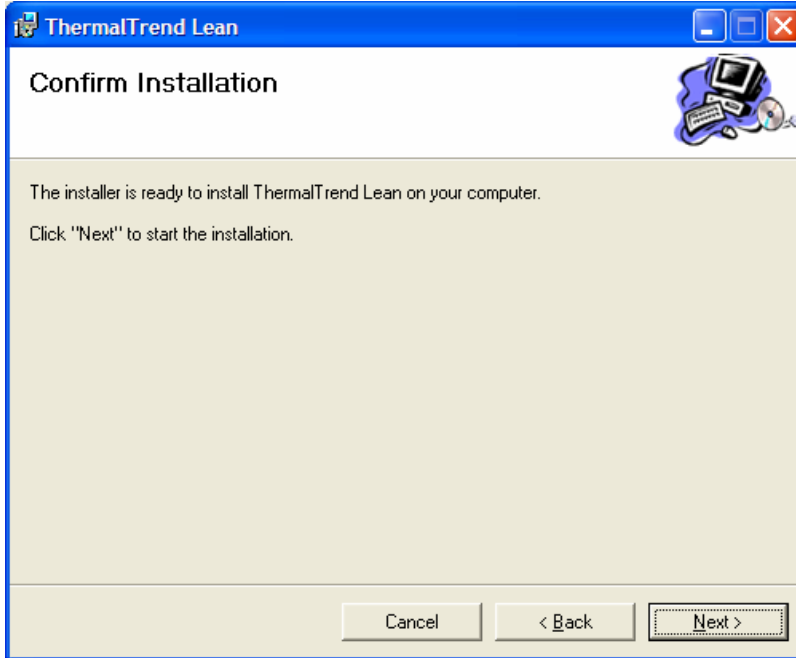




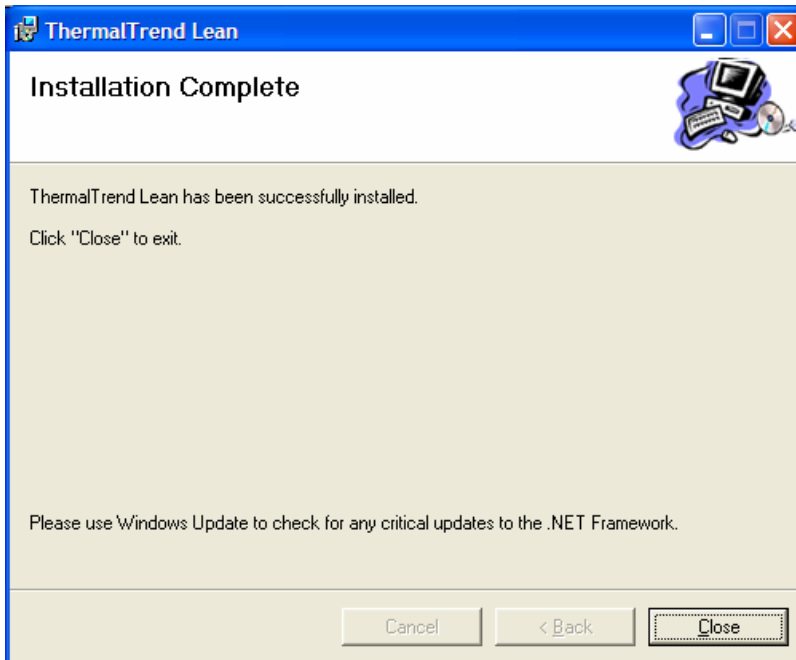
# Thermal Trend

Infrared PdM Inspection Management System

H. Click the Next button to continue the installation.



I. After the installation is completed click the Close button.





# Thermal Trend

Infrared PdM Inspection Management System

## STEP 2:

The next step is to register your Thermal Trend Lean DB.

- A. To register your copy of Thermal Trend, contact Tarry Wolfe at 206-568-4431 x102 or by email at [tarryw@colbert-infrared.com](mailto:tarryw@colbert-infrared.com)

**TTRLean Registration**

Company:

License:

License Type: Unregistered      PC Name: LUDANOTEBOOK

Serial #

TTRLean      1.0.0

---

Request From Server      Licenses Available on Server:

User name:       Type:

Password:       Quantity:





# Thermal Trend

Infrared PdM Inspection Management System

## STEP 3:

After registering your copy of Thermal Trend Lean DB you will need to determine the location (folder) on your computer or network where you will store your infrared images, photos, and attachments. Since Thermal Trend Lean DB use the file names and a predetermined file path (once set) to access your infrared images, photos, attachments to link to them for reporting or reviewing in the program you will need access to this folder when reviewing those items.

- A. Go to “Start” “All Programs” “Thermal Trend” “Thermal Trend – Lean DB” to start the application.
- B. Click the change button to set the location (folder) your infrared images, photos and attachments will be stored in. Note: if storing on the local computer a suggested folder is to create a new folder on the C: drive called “\_Thermal Trend”
- C. Once you have set the Store Folder click the OK button, you have completed the installation process and will now see the Sites Tab on Thermal Trend Lean DB program.

